



Greater Manchester Green City Region Partnership

Date: 29th July 2021

Subject: To note the Appointment of Chair and Agree Green City Region Partnership Terms of Reference for the 2021/22 Municipal Year

Report of: Pam Smith, Stockport Council, Lead Cex Green City Region Portfolio

PURPOSE OF REPORT:

This report sets out the proposed Governance arrangements for the Green City Region Portfolio for the financial year 2021/22.

RECOMMENDATIONS:

The Partnership is requested to:

- a) Note the appointment of Chair of the Green City Region Partnership for the 2021/22 Municipal Year - Councillor Neil Emmott, Bury.
- b) Approve the revised Terms of Reference for the Partnership for the 2021/22 municipal year (Annex 01) and Governance Structure (Annex 01a)
- c) Agree to maintain existing Chair and Vice Chair arrangements for the Challenge Groups: Natural Capital, Low Carbon Buildings, Energy Innovation, 5YEP Forum and Communications/Behaviour Change
- d) Agree the Terms of Reference for the Challenge Groups for the 2021/21 municipal year (Annex 02)
- e) Note the establishment, in parallel, of a Retrofit Taskforce, to be led by the Mayor, which will enhance the delivery of the Buildings and Energy Challenge Groups.

CONTACT OFFICER:

Jenny Hollamby, jenny.hollamby@greastermanchester-ca.gov.uk

BACKGROUND PAPERS:

The following is a list of the background papers on which this report is based in accordance with the requirements of Section 100D (1) of the Local Government Act 1972. It does not include documents, which would disclose exempt or confidential information as identified by that Act.

GMCA Minutes dated 26 June 2020. Papers are available for public viewing at <https://democracy.greatermanchester-ca.gov.uk/ieListDocuments.aspx?CId=136&MId=3943&Ver=4>

1. BACKGROUND

It was agreed, at the GMCA held in June 2021, that the GMCA Green City Region Portfolio Lead (Councillor Neil Emmott, Bury) be appointed to Chair the GM Green City Region Partnership and Board for 2021/22.

Convention dictates that the Partnership should review its Terms of Reference and Membership at the AGM in July each year. GMCA and partners formally established the Green City Region Partnership in July 2019. Since then, the Governance Structure (Annex 01a) proposed at that time has been established and is believed to be generally working well. It is therefore proposed that the existing Terms of Reference for the Partnership (Annex 01) and the Challenge Groups be maintained with minor changes.

2. PROPOSED CHANGES

The proposed changes to Governance and Terms of reference required to continue delivery of the 5 Year Environment Plan include:

- Pam Smith (CEX Stockport MBC) be appointed as Green City Region Portfolio lead Cex to replace Alison Mckenzie Folan.
- Over the year, alternative appointments have been made for the Chair (Will Swan) and Vice Chair (Colette McKune) of the Buildings Group, Vice Chair (Helen Boyle) of the Energy Group; Chair (Anna Bell) and Vice Chair (Neil Hind) of the Sustainable Consumption and Production Challenge Group.
- As part of the Mayoral manifesto commitment, a Retrofit Taskforce has been established. The Taskforce brings together some of the existing members of the Building and Energy Challenge Groups with additional national expertise and specialist on skills and finance. The purpose of the Taskforce is to accelerate the deployment of retrofit across the city region.

3. RECOMMENDATIONS:

The Partnership is requested to:

- Note the appointment of Chair of the Green City Region Partnership for the 2021/22 Municipal Year - Councillor Neil Emmott, Bury.
- Approve the revised Terms of Reference for the Partnership for the 2021/22 municipal year (Annex 01) and Governance Structure (Annex 01a)
- Agree to maintain existing Chair and Vice Chair arrangements for the Challenge Groups: Natural Capital, Low Carbon Buildings, Energy Innovation, 5YEP Forum and Communications/Behaviour Change
- Agree the Terms of Reference for the Challenge Groups for the 2021/22 municipal year (Annex 02)
- Note the establishment, in parallel, of a Retrofit Taskforce, to be led by the Mayor, which will enhance the delivery of the Buildings and Energy Challenge Groups.

Annex 01

GREEN CITY REGION PARTNERSHIP: TERMS OF REFERENCE 2020/21

1. PURPOSE

The purpose of the GM Green City Region Partnership (the Partnership) is to provide strategic oversight of the delivery of the Greater Manchester 5 Year Environment Plan through a Mission Based Approach. In essence, the Mission Based Approach requires setting an ambitious Mission 'Carbon Neutral City Region by 2038' and breaking this down into manageable challenges. Rather than focusing on particular sectors, this approach focuses on problem specific challenges facing society, which will require many different sector's involvement to solve.

The Partnership is responsible, on behalf of the GMCA, for overseeing the monitoring and delivery arrangements for the Greater Manchester 5 Year Environment Plan, as part of Priority 7 'Green City Region' of the Greater Manchester Strategy. The Partnership will oversee delivery via a number of Challenge Groups, identifying individual tasks (Task and Finish Groups), synergies and gaps, then provision of appropriate advice to the GMCA on mitigation measures, including the development and delivery of future policies and strategies.

2. TERMS OF REFERENCE

The Green City Region Partnership will:

- Work with partners to ensure that Greater Manchester can achieve the vision and objectives of the 5 Year Environment Plan, including the achievement of our longer term target of carbon neutrality by 2038.
- On behalf of GMCA and AGMA, oversee the development and implementation of delivery programmes which contribute to achievement of GM priorities articulated in the 5 Year Environment Plan.
- Ensure that activities being undertaken are in line with local and national priorities.
- Ensure that there is a robust evidence base for decision-making.
- Regularly evaluate performance against GM targets and priorities and support the identification of risks and opportunities.
- Ensure that the work and investments of the Green City Region Partnership is integrated with and contributes to broader GM priorities, communicating regularly with other GM commissions and Boards (eg. Planning and Housing Commission, Transport, Waste, Infrastructure Committees and Local Enterprise Partnership).
- Influence local, national and international policies, legislation and programmes in order to deliver a secure, low carbon future for Greater Manchester.
- Broker agreement at strategic level to resolve apparent barriers to delivery.
- Identify potential resources and provide a strategic overview to ensure that all available resources are utilised to enable the city region to deliver its ambitious vision for carbon neutrality by 2038.
- Actively engage with the ten districts and other Greater Manchester Authorities to act as a conduit for the sharing and adoption of good practices.
- Identify and undertake communication activities to engage with Greater Manchester stakeholders and communities on the 5 Year Environment Plan, acting within the scope of the AGMA/GMCA Communications Strategy.

3. MEMBERSHIP

The list below describes those roles relevant for membership of the Green City Region Partnership:

Membership of the Green City Region Partnership for 2021/22	
Councillor Neil Emmott (Bury)	Portfolio Holder & Chair
Tbc	Portfolio Assistant
Pam Smith (Stockport)	Lead Chief Executive
Councillor Steve Adshead	Transport Committee Representative
Councillor Alan Quinn	Waste & Recycling Committee Representative
Councillor McCusker	Planning and Housing Commission
Chris Oglesby/Steve Connor	Local Enterprise Partnership (LEP) Representative
Roger Milburn	Strategic Infrastructure Board
Anne Selby (Wildlife Trust) / Chris Matthews (UU)	Natural Capital Challenge (Local Nature Partnership Representative)
Will Swan (Salford University) Colette Mckune (GM Social Landlord Rep)	Low Carbon Buildings Challenge
Peter Emery/Paul Bircham (ENWL) Helen Boyle (Cadent)	Energy Innovation Challenge
Anna Bell (Suez) Neil Hind (NHS)	Sustainable Consumption and Production Challenge
Louise Blythe (BBC) Phil Korbel (Carbon Literacy)	Communications Challenge
Carly McLachlan (Tyndall) Louise Marix Evans (Quantum)	5 YEP Forum
Lesley Worwick (EA)	Environment Agency Representative
Hisham Elkadi (Salford) Nalin Thakkar (Manchester) Andy Gibson (Manchester Metropolitan)	GM Universities Representatives
Bernard Magee (Siemens) Anna Bell (Suez) Helen Boyle (Cadent)	Private Sector Representatives
Patrick Allcorn (BEIS) Kristina Poole (PHE) Carl Moore/Steph Everett (Homes England)	Central Government Representatives
Sarah Price (H&SCP) Simon Nokes (GMCA) Mark Atherton (GMCA) Simon Warburton (TfGM) Megan Black (TfGM)	Lead Policy Organisation Representatives

Elected members will be nominated to the Green City Region Partnership on an annual basis as part of the GMCA nominations process across the ten Greater Manchester local authorities. Other members of the Partnership will serve for a fixed term of 3 years, appointed on a staggered basis during a 12-month period to ensure that not all memberships are reviewed at the same point.

BOLTON
BURY

MANCHESTER
OLDHAM

ROCHDALE
SALFORD

STOCKPORT
TAMESIDE

TRAFFORD
WIGAN

4 OPERATING PRINCIPLES

4.1 Meetings

The Partnership will meet on a quarterly basis. Meeting dates will be set one year in advance, following the annual meeting. The annual meeting of the Partnership will normally be held in July each year.

The Partnership will be accountable to GMCA and AGMA. The Partnership will not make decisions, financial or otherwise, that require GMCA/AGMA approval, but will refer and make recommendations to AGMA and GMCA as appropriate.

Meetings will be held in public and non-confidential papers will be published on the GMCA website in advance. Papers will be issued five working days before meetings, and a meeting note will be issued within two weeks of the meeting date. The GMCA constitution describes the criteria which an item must meet in order for it to be considered in private. Reports which meet those confidentiality or exemption criteria will be considered in a Part B section of the meeting which excludes the public, as permitted under Schedule 12A of the Local Government Act 1972.

The Partnership will commission Challenge Groups to undertake the specific activities on behalf of the Partnership. The Challenge Groups will be Chaired/Deputy Chaired by Partnership members. The following are proposed for 2021/22:

- Sustainable consumption and production Challenge – Anna Bell/Neil Hind
- Low Carbon Buildings Challenge – Will Swan/Colette McKune
- Energy Innovation Challenge – Peter Emery/Paul Bircham/Helen Boyle
- Natural Capital Challenge – Anne Selby/Chris Matthews
- Communication Challenge – Louise Blythe/Phil Korbel
- 5 YEP Implementation Forum – Carly McLachlan/Louise Marix Evans

The Terms of Reference for these Challenge Groups will be devised by each Group and agreed by the Partnership (Annex 02).

Each of these Challenge Groups will be asked to drive forward action to achieve the targets set out in the 5 Year Plan; report upon progress and identify any barriers which need to be overcome for further progress to be made towards achieving the overall Mission. The Challenge Groups will establish Task and Finish Groups as required to undertake specific activities.

4.2 Support Arrangements

The Partnership will be supported by: the Director of Environment (GMCA), the GM Environment and other teams and appropriate TfGM (Transport) and Manchester Growth Hub (Sector Development) officers. Democratic support will be provided by GMCA Governance and Scrutiny Team where required.

5. ROLES AND RESPONSIBILITIES

5.1 Lead portfolio holder and Chair of the Partnership

As set out in the Greater Manchester Strategy, portfolio leads will own and lead the development of the GM response to those strategic priorities that fall within their remit.

The portfolio lead for Green City Region will:

- Chair the Green City Region Partnership.
- Provide strategic direction for GM's Green City Region approach.
- Maintain oversight of key programmes within the portfolio.
- Ensure alignment between Green City Region policies and programmes and broader GM priorities.
- With the Lead Chief Executive, agree the agenda and papers for each meeting.
- Provide strategic input and direction to GM and national leadership.
- Represent the Partnership in high profile discussions, events and activities at GM level and beyond.
- Represent the Partnership in engagement with GMCA and the LEP.

5.2 Partnership Members

It is expected that Partnership Members will:

- Regularly attend and contribute to meetings.
- Thoroughly review papers and inform the work of the Partnership.
- If appropriate, Chair or Deputy Chair one of the Challenge Groups and regularly report on progress to the Partnership.
- Individually lead specific programmes that contribute to strategic objectives where appropriate.
- Actively identify and advise upon the adoption of good practices.
- Act as a conduit to and represent on the Partnership, the organisation and/or professional field they come from.
- Ensure that they maintain full accountability and transparency to the Partnership on any activities carried out on behalf of the Partnership.
- Ensure that any comment or activity undertaken in their capacity as a Partnership member is aligned with and endorsed by the Partnership.
- Support and enable communication with wider stakeholders about the work of the Partnership, acting as advocates for the Partnership's work.

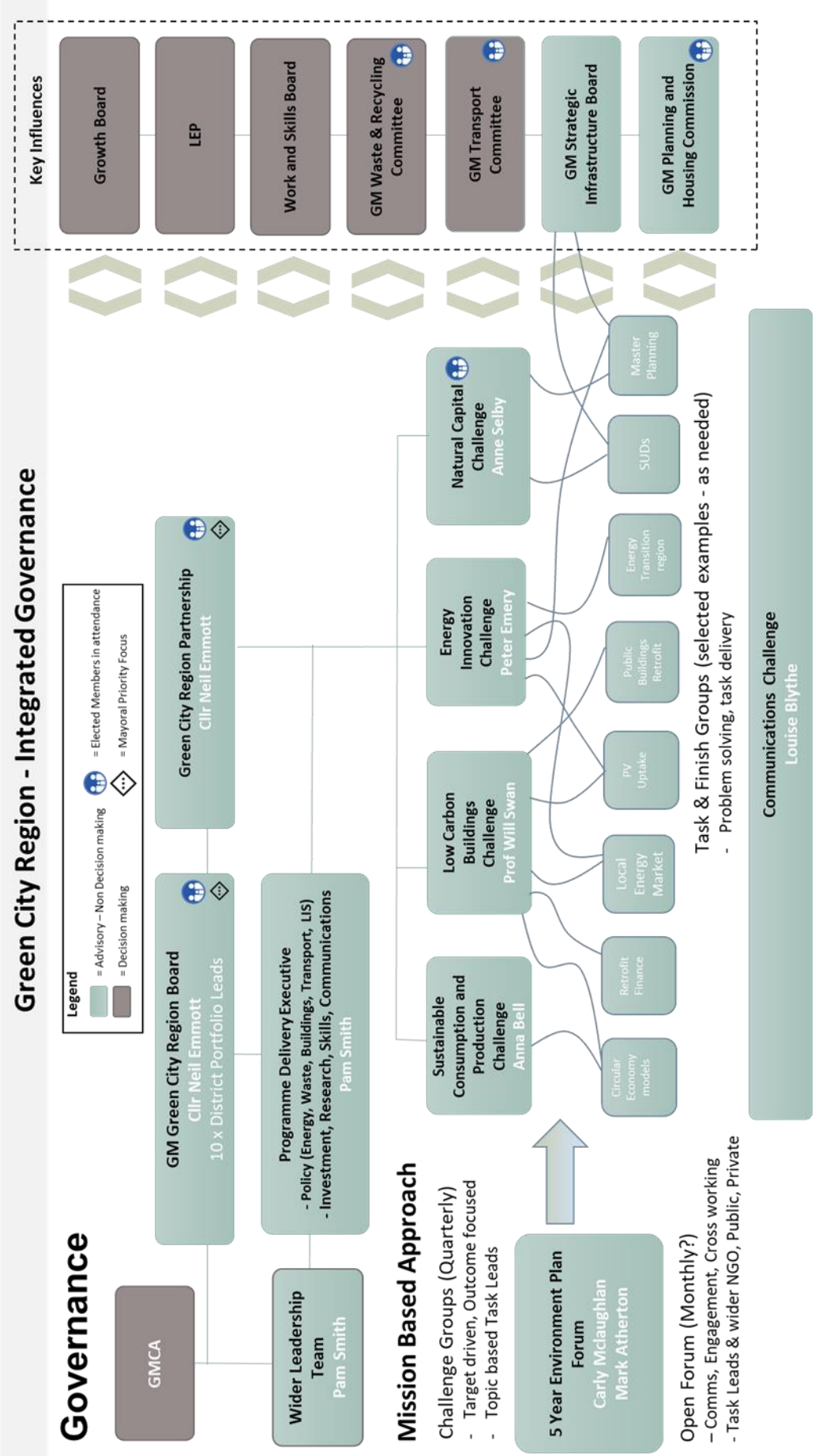
5.3 Supporting officers

To co-ordinate activity across the programme, the Lead Chief Executive, or suitable deputy, will Chair an Environment Programme Delivery Executive Group.

Supporting Officers will:

- Provide regular briefings to the Portfolio Lead, Lead Chief Executive, Partnership and Board on the Green City Region work programme.
- Provide relevant and timely information and reports to the Partnership and Board to enable them to provide timely advice and support to GMCA/AGMA.
- Provide updates to Partnership and Board members as requested on relevant programmes of work.

ANNEX 01A – Governance Structure



Annex 02

GM 5 YEAR ENVIRONMENT PLAN FORUM TERMS OF REFERENCE - July 2021

1. INTRODUCTION

The Greater Manchester 5 YEP Forum aims to support delivery of the GM 5 year Environment Plan by supporting wider engagement with activities and projects developed through the Challenge Groups to increase the uptake of services/offers and to review progress and activities across the Challenge Groups to encourage a whole system approach. The 5 YEP Forum is more about the 'how' we deliver the Plan than 'What' we will deliver.

2. PURPOSE

Our purpose is to ensure that 5 Year Environment Plan and the services it may provide are accelerated and enhanced to deliver;

- The long term vision for the environment and;
- Value to communities across Greater Manchester.

by supporting a whole system approach across a spectrum of activities. These may include but are not restricted to:

- Review reports from Challenge Groups, identify ways to support and scale interventions/project etc and work with Challenge Groups to deliver these.
- Assess barriers and opportunities and put forward measures to overcome them and communicating these to Challenge Groups/Green City Region Partnership as appropriate.
- If required, assign individual tasks to Task and Finish Groups and monitor progress on the tasks.
- Produce reports, publications, and policy recommendations as required;
- Support delivery through our own organisations and networks - raising funding and commission work on the ground to accelerate delivery where possible.
- Take full account of existing work and seek to join up where possible and desirable.
- Provide link between community groups and activity in the 5YEP and the GCR Partnership.
- Provide link between businesses and activity in the 5YEP and the GCR Partnership
- Support lobbying asks to national government where appropriate.
- Support GM role in contributing to local, national, and international climate action, governance and networks (e.g. COP26 and Green Summit activity).

5 YEP Forum Members will, through their commitment and participation, act as conduits to their wider organisations/business units.

3. LONG TERM VISION FOR THE ENVIRONMENT

We want Greater Manchester to be a clean, carbon neutral, climate resilient city-region with a thriving natural environment and circular, zero-waste economy where:

Our infrastructure will be smart and fit for the future: we will have an integrated, clean, and affordable public transport system, resource efficient buildings, greater local community renewable energy, cleaner air, water and green space for all.

All citizens will have access to green space in every community, more trees including in urban areas, active travel networks, environmental education, and healthy and locally produced food.

Citizens and businesses will adopt sustainable living and businesses practices, focusing on local solutions to deliver a prosperous economy.

4. DELIVERY

The key actions and activities of the 5YEP Forum will be informed by the Greater Manchester 5 Year Environment Plan (see Appendix A):

<https://www.greatermanchester-ca.gov.uk/what-we-do/environment/> and the business plans of the Challenge Groups.

The 5 YEP Forum will make decisions to support the Challenge Groups and its own activity and where necessary will take recommendations to the Green City Region (GCR) Partnership.

The 5 YEP Forum is charged with obtaining additional resources and funds to carry out the activities identified (and aligning with existing resources and capacity where possible).

Priority outputs required from the GCR Partnership will be drawn from the 5 Year Environment Plan and Challenge Group work programme.

The 5 YEP Forum does not have a legal identity, any works commissioned by member/s will be commissioned in the name of the said member/s, using their bank account/s and requiring the member/s to take on legal liability.

5. MEMBERSHIP

The 5 YEP Forum will comprise a Chair and Vice Chair plus appropriate members from the public/private/voluntary sectors of GM. The number of members will be deemed as appropriate by the Chair and Vice Chair.

Group members may be asked, at the discretion of the Chair, to assume responsibility for certain portfolios or tasks covering specific aspects of the work programme, geographical locations, projects or initiatives, or oversight of Partnership resources.

The Chair will be appointed by the Chair of the GCR Partnership on behalf of the Combined Authority.

Chair: Carly McLachlan, Tyndall Centre for Climate Change Research, University of Manchester

Vice Chair: Louise Marix-Evans, Quantum Strategy and Technology.

Members: See Appendix B. Group membership will include representation from the Green City Region Partnership.

6. OPERATING PRINCIPLES

6.1 Governance

No business will be transacted unless four 5 YEP Forum members are present. Decisions will largely be reached by consensus, by 2/3 majority vote or where appropriate under Chair's authority.

6.2 Meeting frequency

The Group will meet every 6-8 weeks for 1.5 hours, with meeting dates arranged for a full financial year to align with the Green City Region Partnership meeting dates.

Where-ever practical, papers will be issued five working days before meetings, and the meeting note will be issued within two weeks of the meeting date.

At the discretion of the Group, more frequent Task and Finish meetings may be held if required.

6.3 Support arrangements

The Group will be assigned a lead officer from the Greater Manchester Environment Team to provide co-ordination and facilitation for the meetings.

6.4 Roles and responsibilities

Chair/Vice Chair

- Agree agenda and papers and Chair meetings
- Report back to the Green City Region (GCR) Partnership and represent the views of the Group at Green City Region Partnership meetings

- Ensure all participants are able to contribute equally and are respectful to each other
- Champion the role and views of the Group to external audience

Members

- Regularly attend and contribute to meetings
- Thoroughly review and inform the work of the Group
- Individually lead specific responsibilities/tasks and work programme activities and, where appropriate, identify suitable participants to support delivery of defined tasks
- Report progress against priorities they are responsible for
- Provide recommendations of new members to the Chair

GM Environment Team

- Arrange secretariat support to the meetings
- Co-ordinate and facilitate the development and implementation of the work programme
- Review and contribute to proposed papers
- Provide the operational interface between the other GCR themes
- Work with the Group members to support the implementation of actions

7. COMPETITION LAW COMPLIANCE

Members will work together in a manner that is not anti-competitive and all members will not share information that could be seen to provide a competitive advantage to any party or inhibit the working of competitive markets.

8. RELATIONSHIP WITH OTHER GROUPS

The 5 YEP Forum is a sub-group of the GCR Partnership. The Group will establish relationships and a working protocol with other topic groups on the following principles:

- The Chair of the 5 YEP Forum is a Green City Region Partnership member, and the Vice Chair will deputise in their absence.
- The 5 YEP Forum will set out how it expects the relationship to work with each task and finish group, to be clear about how it thinks it can achieve its aims and objectives. It is expected that this will evolve over time.

Appendix A: Extract from 5 YEP – Doing Things Differently

Doing things differently

In order to deliver our environmental vision and aims this plan sets out and to close the gap between what is needed and where we are now, we need to take different approaches to the following:

- Supporting innovation in technology
- Taking new approaches to finance and funding
- Building on existing partnerships between the public, private and voluntary, community and social enterprise organisations
- Showing leadership
- Engaging and educating residents, communities and businesses
- Upskilling our workforce

SUPPORTING INNOVATION IN TECHNOLOGY	TAKING NEW APPROACHES TO FUNDING AND FINANCING	BUILDING ON EXISTING PARTNERSHIPS
Innovation ecosystem to support all firms to be innovative, supporting the creation of new products and services (e.g. Energy Transition Region proposals)	Long-term sustainable funding models for infrastructure. Developing business models in unproven areas (whole house retrofit; natural environment)	Continuing the engagement from 2018 Green Summit, with GMCA convening stakeholders around key challenges and through a mission-oriented approach
SHOWING LEADERSHIP	ENGAGING & EDUCATING RESIDENTS, COMMUNITIES AND BUSINESSES	UPSKILLING OUR WORKFORCE
A set of commitments from GMCA/LAs, plus health and social housing providers, showing they are leading by example.	Make a programme of carbon literacy available to young people through the GM Career Portal, in addition to our own commitments on carbon literacy for staff in procurement in GMCA and LAs	Engage the sector in BridgeGM, to better link business leaders into schools and colleges.

Appendix B: Current Membership List

Carly McLachlan (Chair),
Clive Memmot (GM Chamber),
Gudrun Stummer (SERA + Ex Reb),
Brad Blundell (Anthesis),
Jonny Sadler (ENWL),
Pete Abel (Mcr Friends of Earth),
Ian Taylor (GMCVO),
Ryan Bellinson (UCL-IIPP),
Phil Korbel (Carbon Literacy Project),
Jess Thompson/Sarah Williams (City of Trees),
Lydia Meryl (SERA),
Chris Matthews (UU);
Steve Connor (Creative Concern)
Mark Easedale (Environment Agency)
Mike Ormerod (Groundwork)
Louise Marix Evans (Quantum)
Gudrun Cartwright (BiTC)
Emma Gardner (Diocese of Salford)

Officers

Mark Atherton (GMCA),
Tina Bugliosi (GMCA),
Robyn Smith (GMCA)
Todd Holden (GMCA)
Lynda Stefek/Matt Roberts (TfGM)

**GREATER MANCHESTER COMMUNICATIONS AND BEHAVIOUR CHANGE
CHALLENGE GROUP
TERMS OF REFERENCE
July 2021**

1. Introduction

The Greater Manchester Communications & Behaviour Change Challenge Group aims to support delivery of communication and behaviour change actions as set out in the GM 5 Year Environment Plan. Greater Manchester aims to become an exemplar for communications and adoption of positive behaviour change, to support the implementation and delivery of the GM 5 Year Environment Plan.

2. Purpose

Our purpose is to ensure that communications and behaviour changes are adopted to accelerate and enhance the delivery of:

- The long term vision for the environment and;
- Value to communities across Greater Manchester.

The Communications & Behaviour Change Challenge Group will aim to achieve the long-term vision for the environment and provide value to communities by supporting a whole system approach across a spectrum of activities. These may include but are not restricted to:

- Support delivery of Challenge Group work programmes
- Assess barriers and opportunities and put forward measures to overcome them
- Assign individual tasks to Task and Finish Groups and monitor progress on the tasks
- Produce reports, publications, and policy recommendations as required;
- Develop project and research proposals
- Raise funding, engage contractors, and commission work on the ground to accelerate delivery.
- Take full account of existing work and seek to join up where possible and desirable.
- Support delivery of COP26 and Green Summit activity.

Communications and Behaviour Change Challenge Group Members will, through their commitment and participation, act as conduits to their wider organisations/business units.

3. Long term vision for the environment

We want Greater Manchester to be a clean, carbon neutral, climate resilient city-region with a thriving natural environment and circular, zero-waste economy where:

Our infrastructure will be smart and fit for the future: we will have an integrated, clean, and affordable public transport system, resource efficient buildings, greater local community renewable energy, cleaner air, water and greenspace for all.

All citizens will have access to green space in every community, more trees including in urban areas, active travel networks, environmental education, and healthy and locally produced food.

Citizens and businesses will adopt sustainable living and businesses practices, focusing on local solutions to deliver a prosperous economy.

4. Priorities

By 2024 we aim to:

Priority 1: Establishing a framework for communication, branding, marketing: Greater Manchester to loudly champion the long term vision for the environment and ambitious targets for the city region, regularly promoting the many steps organisations and individuals can take and the big impact collective action can make.

Priority 2: Working urgently and collaboratively with businesses and communities towards a ambitious environment transition through incentives, Mayoral 'calls to action', campaigns and through greater transparency of data.

Priority 3: Provide support to the 5 Year Environment Plan Challenge Groups to effectively communicate their priorities to the city region.

5. Delivery

The Communications and Behaviour Change Challenge Group will define a Business/Communications Plan each year and agree this with the Chair of the Green City Region Partnership. Key actions and activities will be informed by the Greater Manchester 5 Year Environment Plan <https://www.greatermanchester-ca.gov.uk/what-we-do/environment/>

The Communications and Behaviour Change Challenge Group will make decisions within the scope of the agreed Business/Communications Plan. Decisions outside of the scope of the business plan and recommendations to the Combined Authority will be referred to the Green City Region (GCR) Partnership.

The Communications and Behaviour Change Challenge Group is charged with obtaining additional resources and funds to carry out the activities identified in the Business Plan.

The Group will create space for multiple voices to be heard and will utilise robust evidence and facts to transparently communicate issues and progress.

The Communications and Behaviour Change Challenge Group does not have a legal identity, any works commissioned by member/s will be commissioned in the name of

the said member/s, using their bank account/s and requiring the member/s to take on legal liability.

6. MEMBERSHIP

The Communications and Behaviour Change Challenge Group will comprise a Chair and Vice Chair plus appropriate members from the public/private/voluntary sectors of GM. The number of members will be deemed as appropriate by the Chair and Vice Chair.

Group members may be asked, at the discretion of the Chair, to assume responsibility for certain portfolios or tasks covering specific aspects of the energy sector, geographical locations, projects or initiatives, or oversight of Partnership resources.

The Chair will be appointed by the Chair of the GCR Partnership on behalf of the Combined Authority.

Chair: Louise Blythe, Executive Producer, BBC Academy louise.blythe@bbc.co.uk

Vice Chair: Phil Korbel, Director, The Carbon Literacy Project
phil.korbel@coolerprojects.com

7. OPERATING PRINCIPLES

a. Governance

No business will be transacted unless four Communications and Behaviour Change Challenge Group members are present. Decisions will largely be reached by consensus, by 2/3 majority vote or where appropriate under Chair's authority.

b. Meeting frequency

The Group will meet quarterly for 2-3 hours, with meeting dates arranged for a full financial year to align with the Green City Region Partnership meeting dates. Wherever practical, papers will be issued five working days before meetings, and the meeting note will be issued within two weeks of the meeting date. At the discretion of the Group, more frequent Task and Finish meetings may be held if required.

c. Support arrangements

The Group will be assigned a lead officer from the Greater Manchester Environment Team to provide co-ordination and facilitation for the meetings.

d. Roles and responsibilities

Chair/Vice Chair

- Agree agenda and papers and Chair meetings
- Report back to the Green City Region (GCR) Partnership represent the views of the Group at Green City Region Partnership meetings
- Ensure all participants are able to contribute equally and are respectful to each other
- Champion the role and views of the Group to external audience

Members

- Regularly attend and contribute to meetings
- Thoroughly review and inform the work of the Group
- Individually lead specific responsibilities/tasks and work programme activities and, where appropriate, identify suitable participants to support delivery of defined tasks
- Report progress against priorities they are responsible for

GM Environment Team

- Arrange secretariat support to the meetings
- Co-ordinate and facilitate the development and implementation of the work programme
- Review and contribute to proposed papers
- Provide the operational interface between the other GCR themes
- Work with the Group members to support the implementation of actions

8. Competition licensing law

Members will work together in a manner that is not anti-competitive and all members will not share information that could be seen to provide a competitive advantage to any party or inhibit the working of competitive markets.

9. Relationship with other groups

The Communications Group is a sub-group of the GCR Partnership. The Group will establish relationships and a working protocol with other topic groups on the following principles:

- The Chair of the Communications Challenge Group is a Green City Region Partnership member, and the Vice Chair will deputise in their absence.
- The Communications Challenge Group will set out how it expects the relationship to work with each task and finish group, to be clear about how it thinks it can achieve its aims and objectives. It is expected this will evolve over time.

GREATER MANCHESTER ENERGY INNOVATION GROUP

TERMS OF REFERENCE July 2021

1. Introduction

The Greater Manchester Energy Innovation Challenge Group aims to support delivery of the energy actions as set out in the GM 5 Year Environment Plan. Greater Manchester aims to become a testbed for new innovative technologies, services and investment mechanisms, supporting the implementation and delivery of the GM 5yr Environment Plan.

2. Purpose/promise

Our purpose is to ensure that Energy Innovation and the services it may provide are accelerated and enhanced to deliver;

- The long term vision for the environment and;
- Value to communities across Greater Manchester.

Energy Innovation Challenge Group Members will through their commitment and participation, act as conduits to their wider organisations/business units.

As an Energy Innovation Challenge Member, all parties will achieve the long term vision for the environment and provide value to communities by supporting a whole system approach across a spectrum of activities. These may include but are not restricted to;

- Identifying strategies, plans, barriers and opportunities,
- Produce reports, publications, policy recommendations;
- Raise funding, engage contractors and commission work on the ground to accelerate delivery.

3. Long term vision for the environment

We want Greater Manchester to be a clean, carbon neutral, climate resilient city-region with a thriving natural environment and circular, zero-waste economy where:

Our infrastructure will be smart and fit for the future: we will have an integrated, clean and affordable public transport system, resource efficient buildings, greater local community renewable energy, cleaner air, water and greenspace for all.

All citizens will have access to green space in every community, more trees including in urban areas, active travel networks, environmental education, and healthy and locally produced food.

Citizens and businesses will adopt sustainable living and businesses practices, focusing on local solutions to deliver a prosperous economy.

4. Priorities

By 2024 we aim to:

Priority 1: Increasing local renewable energy generation, adding at least a further 45MW

Priority 2: Decarbonising how we heat our buildings, adding at least a further 10TWh of low carbon heating

Priority 3: Increasing the diversity and flexibility of our electricity supply, adding at least a further 45MW of diverse and flexible load

The group has agreed 5 focus areas to achieve the priorities,

- Energy master planning
- Innovation
- Generation, storage and flexibility
- Low carbon heat
- Transport infrastructure

A number of task and finish groups are operating to address the key focus area.

5. Challenges

Scale of the challenge – “SCATTER GM” pathway 2040:

Priority 1

- 50% of all households have the equivalent of a 16m² solar photovoltaic (PV) system, with an additional 5.5km² on commercial rooftops or in ground-mounted installations
- 550 onshore wind turbines delivering around 3.4TWh/year (by 2050)
- x4.5 increase in current biomass capacity delivering around 4TWh/year

Priority 2

- Phasing out gas boilers so that they account for less than 35% of home heating, with 60% of all heating (domestic and commercial) supplied by low carbon heating.

Priority 3

- Our local energy system will need to adapt in order to accommodate these shifts and the increase in EVs which will mean that an increasing proportion of our energy needs will be met by electricity.
- We need to increase the use of smart technologies, services and local storage to spread the increase in peak loads these changes may bring across the day and to also accommodate anticipated increases in our population (forecast to increase by a 250,000 by 2037), number of homes (forecast to increase by 201,000 by 2037) and office, industrial and warehousing floorspace (forecast to increase by 6.7 million m² by 2037)¹.

¹ <https://www.greatermanchester-ca.gov.uk/gmsf>

6. Key performance indicators

The following key performance indicators have been identified and will be developed further in consultation with partners:

- Number of new renewable energy connections to the network
- Number of KWh/MWh of new renewable energy installed annually across the region
- Number of installs receiving Renewable Heat Incentive (work with low carbon buildings Group)
- KWh of heating being provided by low carbon solutions (work with low carbon buildings Group)
- Number of new energy services developed, tested and trailed
- Number of participants (domestic and commercial) receiving new energy related services
- MWh activity available for demand side response or flexibility services/signals

7. Delivery

The Energy Innovation Group will define a Business Plan each year and agree this with the Chair of the Green City Region Partnership. Key actions and activities will be informed by the Greater Manchester 5 Year Environment Plan (see Appendix A): <https://www.greatermanchester-ca.gov.uk/what-we-do/environment/>

The Energy Innovation Group will make decisions within the scope of the agreed business Plan. Decisions outside of the scope of the business plan and recommendations to the Combined Authority will be referred to the Green City Region (GCR) Partnership.

The Energy Innovation Group is charged with obtaining additional resources and funds to carry out the activities identified in the Business Plan. Priority outputs required from the GCR Partnership will be provided by the Energy Innovation Group and drawn from the 5 Year Environment Plan and Energy Innovation Business Plan.

The Energy Innovation Group does not have a legal identity, any works commissioned by member/s will be commissioned in the name of the said member/s, using their bank account/s and requiring the member/s to take on legal liability.

8. Membership

The Energy Innovation Group will comprise a Chair and Vice Chair plus appropriate members from the public/private/voluntary sectors of GM. The number of members will be deemed as appropriate by the Chair and Vice Chair. Group members may be asked, at the discretion of the Chair, to assume responsibility for certain portfolios or tasks covering specific aspects of the energy sector, geographical locations, projects or initiatives, or oversight of Partnership resources.

The Chair will be appointed by the Chair of the GCR Partnership on behalf of the Combined Authority.

Chair: Paul Bircham, Electricity North West Ltd, Paul.Bircham@enwl.co.uk

Vice Chair: Helen Boyle, Cadent Gas

9. Operating Principles

a. Governance

No business will be transacted unless four Energy Innovation Group members are present. Decisions will largely be reached by consensus, by 2/3 majority vote or where appropriate under Chair's authority.

b. Meeting frequency

The Group will meet quarterly for 2-3 hours, with meeting dates arranged for a full financial year to align with the GCR Partnership meeting dates.

Where-ever practical, papers will be issued five working days before meetings, and the meeting note will be issued within two weeks of the meeting date.

At the discretion of the Group, more frequent Task and Finish meetings may be held if required.

c. Support arrangements

The Group will be assigned a lead officer from the Greater Manchester Environment Team to provide co-ordination and facilitation for the meetings.

d. Roles and responsibilities

Chair/Vice Chair

- Agree agenda and papers and Chair meetings
- Report back to the Green City Region (GCR) Partnership and represent the views of the Group at Green City Region Partnership meetings
- Champion the role and views of the Group to external audience

Members

- Regularly attend and contribute to meetings
- Thoroughly review and inform the work of the Group
- Individually lead specific responsibilities and work programme activities
- Report progress against priorities they are responsible for

GM Environment Team

- Arrange secretariat support to the meetings
- Co-ordinate and facilitate the development and implementation of the work programme

- Review and contribute to proposed papers
- Provide the operational interface between the other GCR themes
- Work with the Group members to support the implementation of actions

10. Competition licensing law

Members will work together in a manner that is not anti-competitive and all members will not share information that could be seen to provide a competitive advantage to any party or inhibit the working of competitive markets.

11. Relationships with other groups

The Energy Innovation Group is a sub-group of the GCR Partnership. The Group will establish relationships and a working protocol with other topic groups on the following principles:

- The Chair of the Energy Innovation Group is a Green City Region Partnership member and the Vice Chair will deputise in their absence.
- The Energy Innovation Group will set out how it expects the relationship to work with each task and finish group, to be clear about how it thinks it can achieve its aims and objectives. It is expected this will evolve over time.

Appendix 1: Relevant Actions from the Greater Manchester 5 Year Environment Plan

Residents

- Install renewable energy at your home
- Switch to a renewable energy supplier
- Plan now for when you next need to replace your current heating system

Greater Manchester Health and Social Care Partnership

- Explore options to purchase green energy
- Encourage innovation and support new technologies
- Work with GM partners to assess opportunities for generating onsite renewable or ultra-low carbon energy

Local Authorities

- Will procure renewable energy tariffs (from GM sources if possible) when they are next procured
- Will complete a full assessment of the potential of our assets for renewable energy and develop these assets (where financially viable) by the end of 2021
- When replacing heating systems in buildings, will install low carbon alternatives where viable, seeking to avoid carbon intensive technologies (gas, coal, oil)

Businesses and other organisations

- Install renewable energy generation at your premises and partner with community energy groups
- Switch to a renewable energy supplier
- Access energy related business support from the Growth Company
- Plan now for when you are next due to replace your heating system

What we need from government policy

- Work with us to develop the Energy Transition Region concept to support innovation
- Accelerate and deepen grid decarbonisation
- Stable and long-term policy landscape
- Decision on long-term decarbonisation of heat

Local policy

- Establish an investment vehicle to develop assets for renewable energy and deliver renewable energy generation on estate.
- Require 20% renewable energy generation at new developments
- Examine the potential to establish a GM collective solar PV/battery purchase to drive up residential uptake
- Seek funding to roll out Local Area Energy Planning across GM to identify which heating solutions are best suited to which areas of the city-region
- Identify "Heat and Energy Network Opportunity Areas" and require an assessment of the viability of connecting new developments to a heat network within these areas
- Convene key partners (industry, academia and utility providers) with a view to them leading the development of a hydrogen strategy for Greater Manchester

Other key partners

- Electricity North West – lead the transition to a "Smart Grid" to help optimise both the generation and use of electricity and facilitate the local trading of electricity

GREATER MANCHESTER LOW CARBON BUILDINGS CHALLENGE GROUP

TERMS OF REFERENCE – July 2021

1. INTRODUCTION

The Greater Manchester Low Carbon Buildings Challenge Group aims to support delivery of the buildings actions as set out in the GM 5 year Environment Plan. Greater Manchester aims to become a testbed for new innovative technologies, services and investment mechanisms, supporting the implementation and delivery of the GM 5 Year Environment Plan.

2. PURPOSE/PROMISE

Low Carbon Buildings Challenge Group Members will through their commitment and participation, act as conduits to their wider organisations/business units.

As a Challenge Group Member, all parties will achieve the long term vision for the environment and provide value to communities by supporting a whole system approach across a spectrum of activities. These may include but are not restricted to:

- Develop an annual business plan and seek to deliver it
- Assess barriers and opportunities and put forward measures to overcome them
- Assign individual tasks to Task and Finish Groups and monitor progress on the tasks
- Produce reports, publications and policy recommendations as required
- Develop project and research proposals
- Raise funding, engage contractors and commission work on the ground to accelerate delivery
- Take full account of existing work and seek to join up where possible and desirable.
- Lobbying national government

3. LONG TERM VISION FOR THE ENVIRONMENT

We want Greater Manchester to be a clean, carbon neutral, climate resilient city-region with a thriving natural environment and circular, zero-waste economy where:

Our infrastructure will be smart and fit for the future: we will have an integrated, clean and affordable public transport system, resource efficient buildings, greater local community renewable energy, cleaner air, water and greenspace for all.

All citizens will have access to green space in every community, more trees including in urban areas, active travel networks, environmental education and healthy and locally produced food.

Citizens and businesses will adopt sustainable living and businesses practices, focusing on local solutions to deliver a prosperous economy.

4. PRIORITIES

By 2024 we aim to:

- Reduce heating demand from existing homes – making progress in scaling up to what is required (i.e. retrofit on the scale of 61,000 properties per year reducing heat loss by 57% up to 2040).
- Reduce heating demand from existing public and commercial buildings (i.e. requiring retrofit on the scale of a 30% reduction in space heating demand by 2040).
- Reduce heat demand in new buildings – note, this will be taken forward and governed separately (through the Greater Manchester Spatial Framework).

And

- Realise 45MW of additional renewable energy generation by 2024
- Realise 10.2TWh of low carbon heating by 2024
- Support (through at-building charge points) the potential for 200,000 low carbon vehicles by 2024.

5. CHALLENGES

The following are the recommendations from the Decarbonising Buildings report, developed by stakeholders across Greater Manchester and beyond and agreed by the Greater Manchester Combined Authority in September 2019.

Domestic

- Current and future ECO funding for retrofit
- Data and indicative targets
- Business models and green finance
- Delivery models
- Skills and supply chain

Commercial

- Reporting in new developments
- Pathways to increased reporting and deployment

Public

- Public reporting
- Accelerated deployment

6. KEY PERFORMANCE INDICATORS

The following key performance indicators have been identified and will be developed further in consultation with partners:

- Number of publicly funded retrofit installs
- Number of installs receiving ECO funding
- Number of new business models developed, demonstrated and deployed
- £'s of green finance deployed
- Number of participants (domestic and commercial) benefiting from new delivery models
- Average number of public buildings achieving DEC rating of D or higher

7. DELIVERY

The Low Carbon Buildings Challenge Group will define a Business Plan each year and agree this with the Chair of the Green City Region Partnership. Key actions and activities will be informed by the Greater Manchester 5 Year Environment Plan (see Appendix A): <https://www.greatermanchester-ca.gov.uk/what-we-do/environment/>

The Low Carbon Buildings Challenge Group will make decisions within the scope of the agreed business Plan. Decisions outside of the scope of the business plan and recommendations to the Combined Authority will be referred to the Green City Region (GCR) Partnership.

The Low Carbon Buildings Challenge Group is charged with obtaining additional resources and funds to carry out the activities identified in the Business Plan. Priority outputs required from the GCR Partnership will be drawn from the 5 Year Environment Plan and Low Carbon Buildings report.

The Low Carbon Buildings Challenge Group does not have a legal identity, any works commissioned by member/s will be commissioned in the name of the said member/s, using their bank account/s and requiring the member/s to take on legal liability.

8. MEMBERSHIP

The Low Carbon Buildings Challenge Group will comprise a Chair and Vice Chair plus appropriate members from the public/private/voluntary sectors of GM. The number of members will be deemed as appropriate by the Chair and Vice Chair.

Group members may be asked, at the discretion of the Chair, to assume responsibility for certain portfolios or tasks covering specific aspects of the low

Carbon Buildings sector, geographical locations, projects or initiatives, or oversight of Partnership resources.

The Chair will be appointed by the Chair of the GCR Partnership on behalf of the Combined Authority.

Chair: Prof Will Swan, Northwards Housing,
Vice Chair: Colette McKune, For Housing,

9. OPERATING PRINCIPLES

a. Governance

No business will be transacted unless four Low Carbon Buildings Challenge Group members are present. Decisions will largely be reached by consensus, by 2/3 majority vote or where appropriate under Chair's authority.

b. Meeting frequency

The Group will meet quarterly for 2-3 hours, with meeting dates arranged for a full financial year to align with the Green City Region Partnership meeting dates. Where-ever practical, papers will be issued five working days before meetings, and the meeting note will be issued within two weeks of the meeting date. At the discretion of the Group, more frequent Task and Finish meetings may be held if required.

c. Support arrangements

The Group will be assigned a lead officer from the Greater Manchester Environment Team to provide co-ordination and facilitation for the meetings.

d. Roles and responsibilities

Chair/Vice Chair

- Agree agenda and papers and Chair meetings
- Report back to the Green City Region (GCR) Partnership and represent the views of the Group at Green City Region Partnership meetings
- Ensure all participants are able to contribute equally and are respectful to each other
- Champion the role and views of the Group to external audience

Members

- Regularly attend and contribute to meetings
- Thoroughly review and inform the work of the Group
- Individually lead specific responsibilities/tasks and work programme activities and, where appropriate, identify suitable participants to support delivery of defined tasks
- Report progress against priorities they are responsible for

GM Environment Team

- Arrange secretariat support to the meetings
- Co-ordinate and facilitate the development and implementation of the work programme
- Review and contribute to proposed papers
- Provide the operational interface between the other GCR themes
- Work with the Group members to support the implementation of actions

10. COMPETITION LAW COMPLIANCE

Members will work together in a manner that is not anti-competitive and all members will not share information that could be seen to provide a competitive advantage to any party or inhibit the working of competitive markets.

11. RELATIONSHIP WITH OTHER GROUPS

The Low Carbon Buildings Challenge Group is a sub-group of the GCR Partnership. The Group will establish relationships and a working protocol with other topic groups on the following principles:

- The Chair of the Low Carbon Buildings Group is a Green City Region Partnership member and the Vice Chair will deputise in their absence.
- The Low Carbon Buildings Challenge Group will set out how it expects the relationship to work with each task and finish group, to be clear about how it thinks it can achieve its aims and objectives. It is expected this will evolve over time.
- The Low Carbon Building Challenge Group will support the newly established Retrofit Taskforce chaired by the Mayor of GM. A number of challenge group members/ their organisations are represented on the Taskforce to ensure the two groups are successfully linked.

Appendix 1: Relevant Actions from the Greater Manchester 5 Year Environment Plan

Residents

- Get the basics right – including LED lighting and draught-proofing
- Upgrade your home insulation – loft, cavity wall and draught
- Think about whole-house retrofit, particularly if carrying out renovations

Local Authorities

- Standardise measurement and reporting of the operational efficiency of their buildings.
- GMCA and LAs will aim to obtain an average DEC of rating D or better by 2024 and C or better by 2030 for their public buildings where economically viable.

Greater Manchester Health and Social Care Partnership:

- Work with partners to include sustainability indicators in their review of buildings

Businesses and other organisations

- Sign up to the Net Zero Carbon Buildings commitment
- Measure, report on and improve the operational energy efficiency of premises, coming together within sectors to do so.
- Consider greener, more energy efficient premises when current or future contracts require renewal.
- Engage with landlords/tenants landowners and tenants over key issues – e.g. data sharing, energy efficiency measures, green energy.

Other key partners

- Social Housing Providers – commitments to the efficiency of existing homes and to building new homes to net zero carbon in advance of 2028
- Voluntary, Community and Social Enterprise Organisations – continue to work with partners as we develop a GM retrofit partnership focussed on helping people and communities

Local policy

- Develop a GM retrofit partnership/accelerator to tackle sector development/skills and access to finance/capacity
- Launch a major new drive to raise standards in the private rented sector, including the development of a GM Good Landlord standard.
- Investigate encouraging greater energy efficiency through council tax and business rates and other financial vehicles.
- Implement a business support programme for energy efficiency
- Require zero carbon development by 2028

Other key partners

- Working with us to develop new technology and financial models to make domestic and commercial retrofit at scale a possibility.
- Meeting commitments on smart meter roll-out.
- Changing the Energy Company Obligation (ECO) funding to ensure it is more effective at meeting GM's needs.

GREATER MANCHESTER NATURAL CAPITAL GROUP
TERMS OF REFERENCE
July 2021

1. Introduction

The Greater Manchester Natural Capital Group delivers the Local Nature Partnership in the Greater Manchester area. Greater Manchester is pioneering innovative approaches for investing in and managing the environment, supporting the implementation of the Greater Manchester 5 Year Environment Plan (5YEP).

2. Purpose/promise

Our purpose is to ensure that nature and the services it provides are protected and enhanced to deliver value to communities across Greater Manchester.

3. VISION

To put nature at the heart of everything we do.

4. GOALS

By 2024 we aim to:

1. Implement biodiversity net gain approach in our planning system.
2. Adopt environmental net gain approach in our planning system.
3. Increase, year on year, non-public funding in our natural environment.
4. Significantly increase the amount of trees and restored peatland across GM.
5. embed natural capital approaches into our investments and decision making.
6. increase engagement of people with their natural environment.
7. Adopt plans for a Greater Manchester nature recovery network.

5. HOW (Greater Manchester Natural Capital Group Priorities)

1. Manage our land sustainably, including planting 1 million trees by 2024 – creating rich habitat, in good condition for wildlife, delivering partnership projects at a landscape scale.
2. Managing our water and its environment sustainably – enhancing water quality and reducing the risk of flooding.

3. Achieving a net gain in biodiversity for new development – embedding the natural environment in decision making and championing the wider benefits to society this brings, such as improving health and wellbeing.
4. Increasing investment into our natural environment – a good deal for nature by working with national and local government and the private sector.
5. Increasing our engagement with our natural environment – more people and businesses inspired by, and taking action for, wildlife, with more people visiting local green spaces.
6. Embracing natural capital approaches to deliver environmental enhancements such as greater carbon sequestration and biodiversity net gain.
7. Develop the means to measure the social value of Greater Manchester's environment, drawing on measures such as health and wellbeing benefits for the population and nature and greenspace indicators.

6. KEY PERFORMANCE INDICATORS

The following key performance indicators have been identified which will be developed further in consultation with partners:

1. Amount of peatland restoration and management for carbon restoration.
2. Number of trees planted.
3. People living within Natural England ANGSt (accessible natural green space) Standards.
4. Water bodies enhanced (per km).
5. Net gain in biodiversity (to be further informed by national policy and local Natural England Guidance) from an agreed baseline.
6. % of SSSI (Sites of Special Scientific Interest) favourable condition.
7. Amount of non-public investment - no. of projects with greater than x% of non-public funding in implementing the Natural Capital Investment Plan.
8. Increase in number of people engaged - halve the gap between the national average of people who have visited the natural environment in the past seven days/level of engagement of people with the natural environment (MENE).

7. DELIVERY

The Natural Capital Group will define a Business Plan each year and agree this with the Chair of the Greater Manchester Green City Region Partnership. Key actions and activities will be informed by the Greater Manchester 5YEP (see Appendix A): <https://www.greatermanchester-ca.gov.uk/what-we-do/environment/>.

The Natural Capital Group will make decisions within the scope of the agreed Business Plan. Decisions outside of the scope of the Business Plan and recommendations to the Combined Authority will be referred to the Greater Manchester Green City Region Partnership.

The Natural Capital Group is charged with obtaining additional resources and funds to carry out the activities identified in the Natural Capital Group Business Plan.

Priority outputs required from the Greater Manchester Green City Region Partnership will be provided by the Natural Capital Group and drawn from the Natural Capital Group Business Plan.

8. MEMBERSHIP

The Natural Capital Group will comprise a Chair and Vice-Chair plus appropriate members from the public/private/voluntary sectors of GM. The number of members will be deemed as appropriate by the Chair and Vice-Chair. Group members may be asked, at the discretion of the Chair, to assume responsibility for certain portfolios covering specific aspects of the natural environment, geographical locations, projects or initiatives, or oversight of Partnership resources.

The Chair and Vice-Chair will be appointed by the Chair of the Greater Manchester Green City Region Partnership on behalf of the Greater Manchester Combined Authority.

Chair: Anne Selby, Independent, anne_selby7@outlook.com.

Vice-Chair: Chris Matthews, United Utilities, Chris.Matthews@uuplc.co.uk

9. OPERATING PRINCIPLES

9.1 Governance

No business will be transacted unless four Natural Capital Group members are present. Decisions will largely be reached by consensus, by two thirds majority vote or where appropriate under Chair's authority.

9.2 Meeting frequency

The Group will meet quarterly for two hours, with meeting dates arranged for a full financial year to align with the Greater Manchester Green City Region Partnership meeting dates.

When practical, papers will be issued five working days before meetings, and the meeting note will be issued within two weeks of the meeting date.

The Greater Manchester Forest Partnership will report minutes from their meeting back to the Natural Capital Group as a standing item.

At the discretion of the Group, more frequent Task and Finish meetings may be held if required for example, the Greater Manchester Environment Fund.

9.3 Support arrangements

The Group will be assigned a lead officer from the Greater Manchester Environment Team to provide co-ordination and facilitation for the meetings.

9.4 Roles and responsibilities

Chair:

- Agree agenda and papers and Chair meetings.
- Report back to the Greater Manchester Green City Region Partnership and represent the views of the Group at meetings.
- Champion the role and views of the Group to external audience

Members:

- Regularly attend and contribute to meetings.
- Thoroughly review and inform the work of the Group.
- Individually lead specific responsibilities and work programme activities.
- Report progress against priorities they are responsible for.

Greater Manchester Environment Team:

10. Arrange secretariat (from the Governance & Scrutiny Team, GMCA) support to the meetings.

11. Co-ordinate and facilitate the development and implementation of the work programme.

12. Review and contribute to proposed papers.

13. Provide the operational interface between the other Greater Manchester Green City Region Partnership themes.

14. Work with the Group members to support the implementation of actions.

10 RELATIONSHIP WITH OTHER GROUPS

The Natural Capital Group is a Task and Finish group of the Greater Manchester Green City Region Partnership. The Group will establish relationships and a working protocol with other topic groups on the following principles:

- The Chair of the Natural Capital Group is a Greater Manchester Green City Region Partnership member.
- The Natural Capital Group will set out how it expects the relationship to work with each group to be clear about how it thinks it can achieve its aims and objectives. It is expected this will evolve over time.

Relevant Actions from the Greater Manchester 5 Year Environment Plan

SUMMARY OF OUR ACTIONS – NATURAL ENVIRONMENT:

Residents

- If you have a garden or an allotment, manage this for wildlife.
- Visit, spend time and be active in local green and blue spaces.
- Volunteer for projects that protect or improve the environment in your local area.

Businesses and other organisations

- Manage any gardens or land for wildlife
- Put in place green roofs and/or green walls and/or plant trees.
- Invest in Greater Manchester's natural environment
- Promote environmental volunteering amongst your employees

Landowners and farmers

- Enter into agri-environment agreements to fund environmental improvements on your land
- Access additional funding to create or restore ponds through new District Licensing scheme for great crested newts

Local Authorities

- Build natural capital into projects to maximise the value that the environment brings including on estates and land.

Residents

- City of Trees – develop, embed and support delivery of a Greater Manchester Tree and Woodland Strategy, contribute to 3m tree planting target and increase volunteering and engagement.
- Environment Agency – explore the development of a Natural Capital Plan for Greater Manchester and work with United Utilities to deliver the benefits of its investment across the Irwell and Upper Mersey catchments.
- Greater Manchester Health and Social Care Partnership – ensure that their approach to developing a Greater Manchester Population Health system understands the importance of the natural environment as a key wider determinant of health, and seeks to ensure that action undertaken is reflective of that understanding; promote the health benefits of green space and maximise the opportunities to incorporate this into their programmes.
- Lancashire Wildlife Trust – support delivery of the Greater Manchester Wetlands Nature Improvement Area and increase the number of people engaged with nature.
- Natural England – identify peatland restoration opportunities, new Great Crested Newt licensing scheme, lead developing biodiversity net gain guidance and explore application of green infrastructure standards and establishing of a nature recovery network.
- Royal Horticultural Society – inspire more of Greater Manchester's residents to get involved in gardening and improving their local environments, working in partnership with other community growing projects
- United Utilities – invest £300m at waste water treatment works to improve river quality (2015-2020) and implement further planned improvements in 2020-2025 business plan

Local policy

- Continue the work of the urban pioneer, embedding a natural capital approach into strategy and plan development.
 - Support peatland restoration as part of Resilience Strategy.
 - Support the delivery of a biodiversity net gain approach in new development.
 - Support the development of a Greater Manchester Environment Fund.
 - Support the implementation of the Natural Capital Investment Plan (subject to approval) to increase private sources of funding.
 - Launch a programme of innovative funding mechanisms to deliver increased investment in nature-based adaptation solutions (subject to approval).
-

GREATER MANCHESTER SUSTAINABLE CONSUMPTION AND PRODUCTION GROUP TERMS OF REFERENCE July 2021

1. Introduction

The Greater Manchester Sustainable Consumption and Production Challenge Group aims to support delivery of the energy actions as set out in the GM 5 Year Environment Plan. Greater Manchester aims to become a testbed for new innovative technologies, services and investment mechanisms, supporting the implementation and delivery of the GM 5yr Environment Plan.

2. Purpose/promise

Our purpose is to ensure that Sustainable Consumption and Production and the services it may provide are accelerated and enhanced to deliver;

- The long term vision for the environment and;
- Value to communities across Greater Manchester.

Sustainable Consumption and Production Challenge Group members will through their commitment and participation, act as conduits to their wider organisations/business units.

As a Challenge Group member, all parties will achieve the long term vision for the environment and provide value to communities by supporting a whole system approach across a spectrum of activities. These may include but are not restricted to;

- Identifying strategies, plans, barriers and opportunities,
- Produce reports, publications, policy recommendations;
- Raise funding, engage contractors and commission work on the ground to accelerate delivery.

3. Long term vision for the environment

We want Greater Manchester to be a clean, carbon neutral, climate resilient city-region with a thriving natural environment and circular, zero-waste economy where:

Our infrastructure will be smart and fit for the future: we will have an integrated, clean and affordable public transport system, resource efficient buildings, greater local community renewable energy, cleaner air, water and greenspace for all.

All citizens will have access to green space in every community, more trees including in urban areas, active travel networks, environmental education, and healthy and locally produced food.

Citizens and businesses will adopt sustainable living and businesses practices, focusing on local solutions to deliver a prosperous economy.

4. Priorities

By 2024 we aim to:

- Produce goods and services more sustainably, moving to a circular economy
- Become more responsible consumers
- Managing our waste as sustainably as possible
- Reducing unnecessary food waste

The group has agreed 3 focus areas to achieve the priorities,

- Promoting sustainable lifestyles
- Moving to a circular city region
- Sustainable procurement

5. Challenges

Scale of the challenge – “SCATTER GM” pathway 2040:

Priority 1: 50-77% reduction in industrial emissions (38% by 2025)

Priority 2: Limit any increase in the quantity of waste produced to 20%

Priority 3: Achieve a recycling rate of 65% by 2035

6. Key performance indicators

The group is currently assessing it's KPIs

7. Delivery

The Sustainable Consumption and Production Group will define a Business Plan each year and agree this with the Chair of the Green City Region Partnership. Key actions and activities will be informed by the Greater Manchester 5 Year Environment Plan (see Appendix A): <https://www.greatermanchester-ca.gov.uk/what-we-do/environment/>

The Group will make decisions within the scope of the agreed business Plan. Decisions outside of the scope of the business plan and recommendations to the Combined Authority will be referred to the Green City Region (GCR) Partnership.

The Group is charged with obtaining additional resources and funds to carry out the activities identified in the Business Plan.

Priority outputs required from the GCR Partnership will be provided by the Group and drawn from the 5 Year Environment Plan and Sustainable Consumption and Production Business Plan.

The Sustainable Consumption and Production Group does not have a legal identity, any works commissioned by member/s will be commissioned in the name of the said

member/s, using their bank account/s and requiring the member/s to take on legal liability.

8. Membership

The Sustainable Consumption and Production Group will comprise a Chair and Vice Chair plus appropriate members from the public/private/voluntary sectors of GM. The number of members will be deemed as appropriate by the Chair and Vice Chair. Group members may be asked, at the discretion of the Chair, to assume responsibility for certain portfolios or tasks covering specific aspects of the waste sector, geographical locations, projects or initiatives, or oversight of Partnership resources.

The Chair will be appointed by the Chair of the GCR Partnership on behalf of the Combined Authority.

Chair: Anna Bell, Suez

9. Operating Principles

a. Governance

No business will be transacted unless four Sustainable Consumption and Production Group members are present. Decisions will largely be reached by consensus, by 2/3 majority vote or where appropriate under Chair's authority.

b. Meeting frequency

The Group will meet quarterly for 2-3 hours, with meeting dates arranged for a full financial year to align with the GCR Partnership meeting dates.

Where-ever practical, papers will be issued five working days before meetings, and the meeting note will be issued within two weeks of the meeting date.

At the discretion of the Group, more frequent Task and Finish meetings may be held if required.

c. Support arrangements

The Group will be assigned a lead officer from the Greater Manchester Environment Team to provide co-ordination and facilitation for the meetings.

d. Roles and responsibilities

Chair/Vice Chair

- Agree agenda and papers and Chair meetings
- Report back to the Green City Region (GCR) Partnership and represent the views of the Group at Green City Region Partnership meetings
- Champion the role and views of the Group to external audience

Members

- Regularly attend and contribute to meetings
- Thoroughly review and inform the work of the Group
- Individually lead specific responsibilities and work programme activities
- Report progress against priorities they are responsible for

GM Environment Team

- Arrange secretariat support to the meetings
- Co-ordinate and facilitate the development and implementation of the work programme
- Review and contribute to proposed papers
- Provide the operational interface between the other GCR themes
- Work with the Group members to support the implementation of actions

10. Competition licensing law

Members will work together in a manner that is not anti-competitive and all members will not share information that could be seen to provide a competitive advantage to any party or inhibit the working of competitive markets.

11. Relationships with other groups

The Sustainable Consumption and Production Group is a sub-group of the GCR Partnership. The Group will establish relationships and a working protocol with other topic groups on the following principles:

- The Chair is a Green City Region Partnership member.
- The Group will set out how it expects the relationship to work with each task and finish group, to be clear about how it thinks it can achieve its aims and objectives. It is expected this will evolve over time.